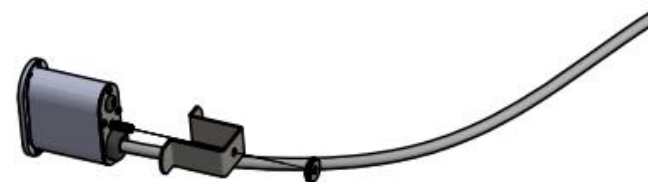
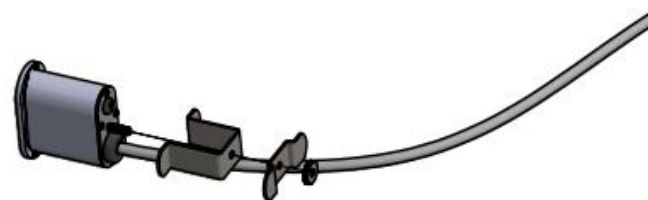


CAAV

IN SURFACE POWER INSTALL

NO TOOLS REQUIRED

EC46 Power Unit shown



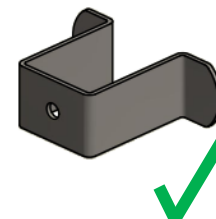
STEP 1:

- Remove thumb nut from rear of EC46 unit and remove both of the retainer brackets as shown.
- Keep the thumb nut
- You will discard the smaller of the 2 brackets and keep the larger. The smaller is utilized in applications other than work surfaces.

NOTE: all screws provided must be installed for proper installation and compliance with product warranty.



Discard



Keep

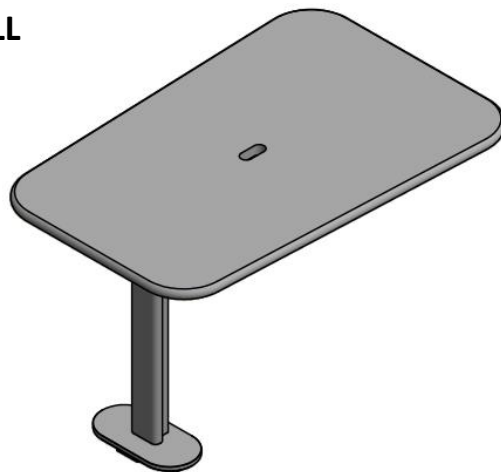
CAAV

IN SURFACE POWER INSTALL

NO TOOLS REQUIRED

STEP 2:

- Locate the cutout in the top that power will be installed in.
- Run the cord thru the cutout and place the unit within the cutout



NOTE: all screws provided must be installed for proper installation and compliance with product warranty.

STEP 3:

- Slide bracket onto stud and fasten in place with the thumb nut as shown
- Securely tighten down
- Installation complete

